

Supremo Supermarket Philadelphia, PA

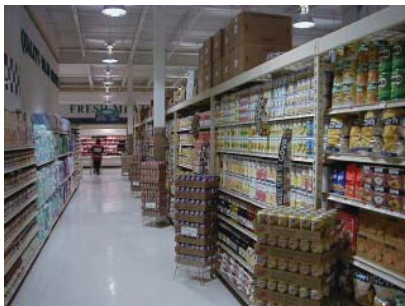


Exterior of Supremo Food Market

Designed to compliment the North Philadelphia community it serves, the new Thriftway store blends in well with the architecture of the neighborhood, and its selection of food items are compatible with the tastes of the diverse population of this section of the city. Ninety percent (90%) of the employment positions filled at Brown's Thriftway were given to people who lived within a 3 block radius of the store, providing an economic boost to the community.



Urban Aerial View of Supremo



A 40,000 square foot Fleming Thriftway market, located at Broad and Wingohocking Streets. Construction commenced on May 20, 1999, and the market opened ahead of schedule and within budget on November 13, 1999. Minority participation on this inner-city project was 37%.